



9425 N Meridian St STE 213  
Indianapolis, IN 46260  
888-CDS-2MP3  
support@moondogdigital.com

User Guide  
  
based products

# SOFTWARE INSTALLATION AND CONFIGURATION

Please refer to the following documentation using the supplied credentials from the welcome email:

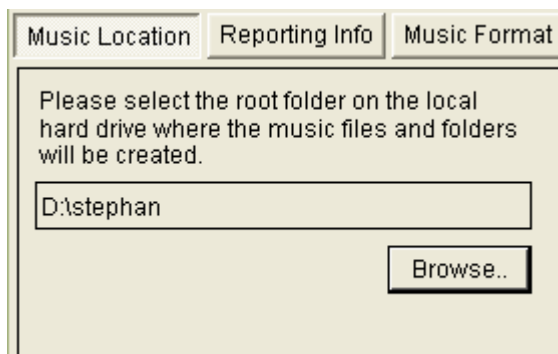
- RoboStation Installation Guide
- RoboStation User Guide

## SPECIFIC XIVA LOADING INSTRUCTIONS FOR ROBOSTATION

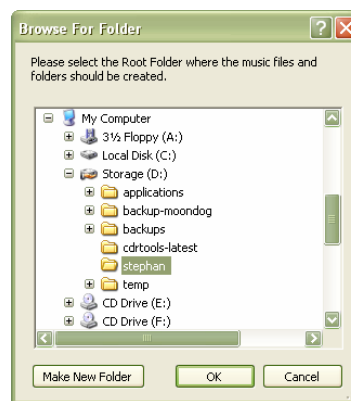
### Ripping to Local Hard Drive Instructions

1. Within the RoboStation application, click the *Browse..* button located on the *Music Location* screen (below left) to access the *Browse For Folder* screen (below right).

#### RoboStation Screenshots



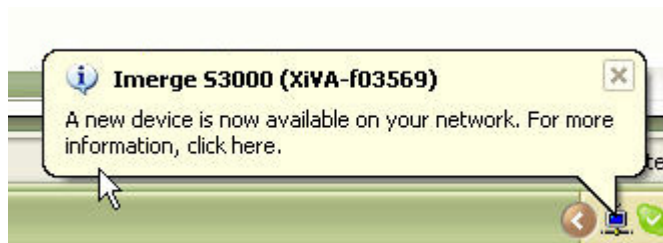
Selecting the *Music Destination* folder



After Clicking *OK*, the music location will be set within RoboStation

2. Either *Make New Folder* or select an existing folder which will serve as the root folder for all the music.
3. Clicking *OK* will set the destination location similar to the location seen in screenshot (above left).
4. Begin the conversion process by clicking *Encode*.
5. Once complete, close all applications.
6. Next, locate the media server on your network.

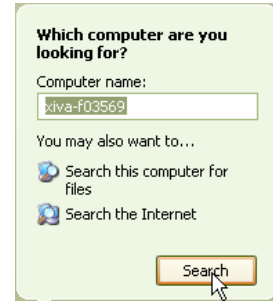
The media server will become available momentarily after powering on.



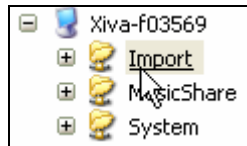
7. Locate the media server via *Network Places* or *Find a Computer*.



The media server may show in the Network Places (left) or you may need to search for the media server using the name (right).



- Once found, double-click on the media server. You will be prompted for username and password, so use the manufacturer-supplied credentials (Imerge username: imerges3000, password: imerges3000).



The Import folder is the digital music's destination.

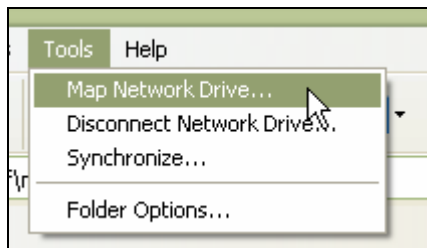
- Find the recently converted music in the destination location as specified in steps 2 and 3. Move the music to the *Import* folder.
- The media server will import the music automatically. CD information and cover art will be available shortly after import.

NOTE: If you need to remove all music on an ImergeS3000, the password is *ResetMyMusic*. To clear the server, go to Setup | Settings | System Information then **Reset System**. You'll be asked to confirm your request and enter the password above.

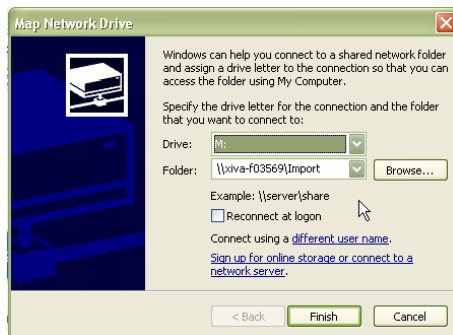
### Direct Rip to Media Server

Notes: Moondog Digital does not recommend ripping directly to the media server due to the decrease in speed, issues arising from troublesome networks, and fact that this option does not create a backup copy. Additionally, if you decide to rip the music directly, please take the time to map a network drive (see below).

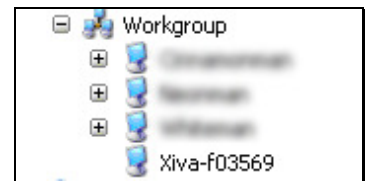
- Begin to map a network drive from *Windows Explorer* or *My Computer* by selecting 'Map Network Drive' from the *Tools* menu (below left).



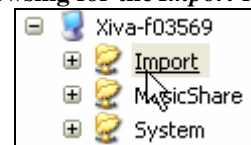
Creating a Drive Letter for the *Import* folder on the media server



Selecting the *Import* folder by typing or Browsing (right)

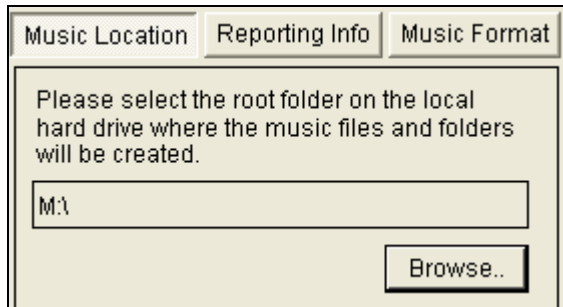


Browsing for the *Import* folder

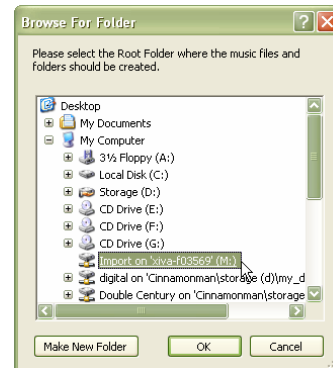


2. Now the PC will have an “M:\” to represent the media server’s hard drive.
3. Simply select the media server’s M:\ drive by clicking RoboStation’s *Browse..* button (below left).

## RoboStation Screenshots



Selecting the *Music Destination* folder



After Clicking OK, the Music Location will be set within RoboStation

4. Begin the conversion process by clicking *Encode*.
5. During the conversion, the media server will import the music.