



9425 N Meridian St STE 213
Indianapolis, IN 46260
888-CDS-2MP3
support@moondogdigital.com

User Guide Network Attached Storage (NAS) Ripping Projects

SOFTWARE INSTALLATION AND CONFIGURATION

Please refer to the following documentation using the supplied credentials from the welcome email:

- RoboStation Installation Guide
- RoboStation User Guide

NETWORK ATTACHED STORAGE LOADING INSTRUCTIONS FOR ROBOSTATION

NOTES:

Moondog Digital does not recommend ripping across networks for the following reasons:

- Writing files across a network is slower than local hard drive
- Sub-par networks will increase the possibility of issues
- This setup does not create a backup copy
- Increased network traffic can impair other network users

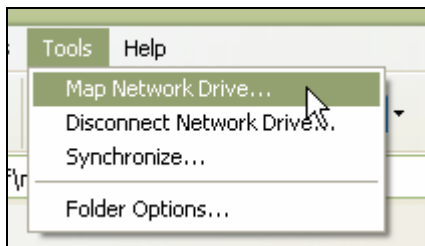
Please consider ripping to the local PC hard drive, then completing a single copy process to the NAS.

Direct Rip to Network Attached Storage

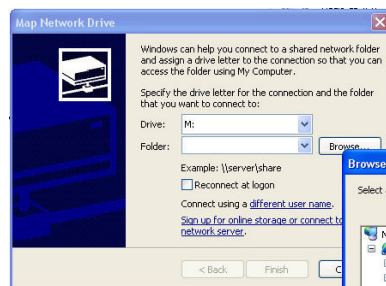
To proceed with ripping to NAS (Netgear ReadyNAS NV+ Shown)

Vista Users: The process is very similar to the Windows XP steps shown below. Please refer to the end of this document for a brief overview to the differences.

1. Begin to map a network drive open *Windows Explorer* or *My Computer*
2. Locate the NAS by one of the following two ways:
 - a. By selecting 'Map Network Drive' from the *Tools* menu (below left).



Create a Drive Letter for the *Import* folder on the media server

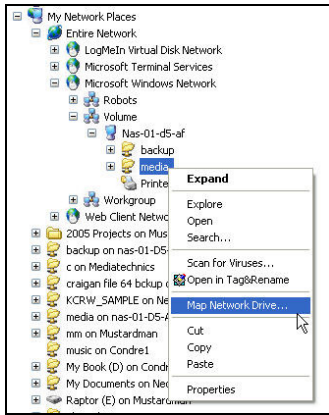


Select the desired drive letter and folder by typing or Browsing (right)

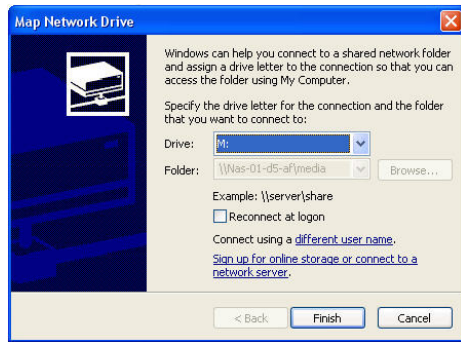


Select folder, click OK, then Finish

- b. By expanding My Network Places, locate the desired folder, and right-click it (below left)



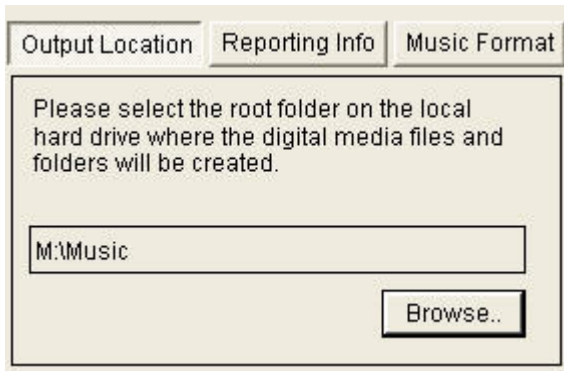
Traverse the network tree to locate the desired folder



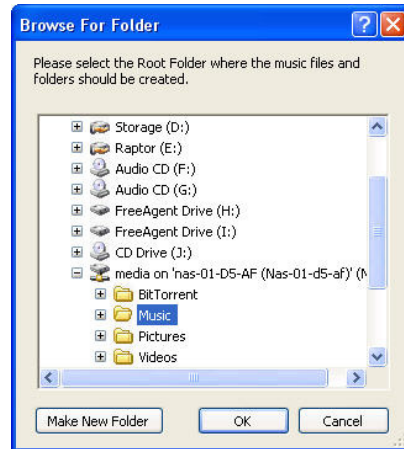
Select the desired drive (note the Folder is set for you) and click Finish

3. Now the PC will have an “M:\” to represent the NAS’ hard drive.
4. Simply select the PC’s new “M:\” drive by clicking RoboStation’s *Browse..* button (below left).

RoboStation Screenshots



Selecting the *Destination* folder

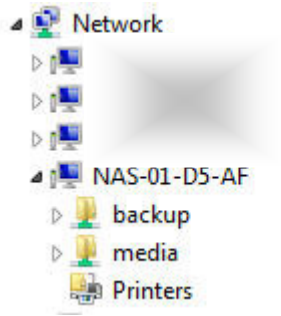


After Clicking OK, the Output Location will be set within RoboStation

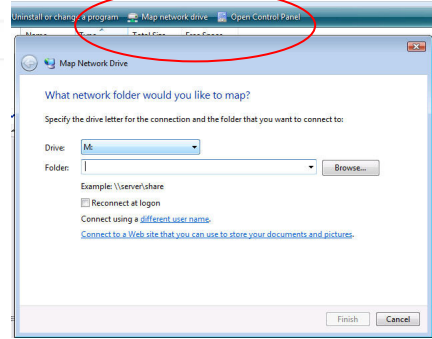
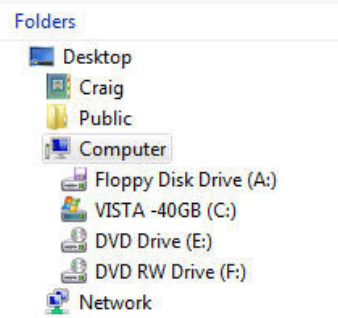
NOTE: The ReadyNAS has “Music” and “Videos” folders which may be useful for your project.

5. Begin the conversion process by clicking *Encode*.

Windows Vista Notes/Modifications



Note the Network tree is simplified within Vista



The "Map network drive" option only appears in the tool bar if "Computer" is selected within the list on the right